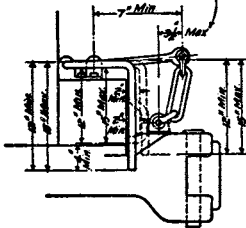


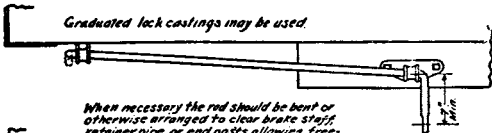
*This dimension to be taken when horn of coupler is against buffer block or end sill, and, if slotted bracket is used, when rod is in extreme forward position in bracket.*

*Application to concealed endsill cars.*

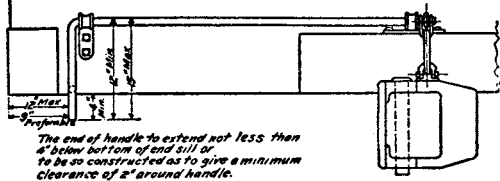


*Application to outside endsill cars.*

*Graduated lock castings may be used.*

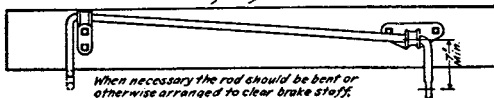


*When necessary the rod should be bent or otherwise arranged to clear brake staff, retainer pipe, or end posts, allowing freedom in lifting and full play in bracket.*

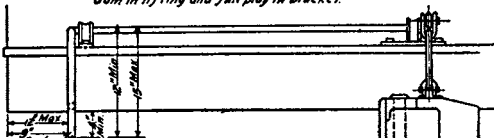


*The end of handle to extend not less than 4\"/>*

*Graduated lock castings may be used.*



*When necessary the rod should be bent or otherwise arranged to clear brake staff, retainer pipe, or end posts, allowing freedom in lifting and full play in bracket.*



*The end of handle to extend not less than 4\"/>*

**PLATE  
B**