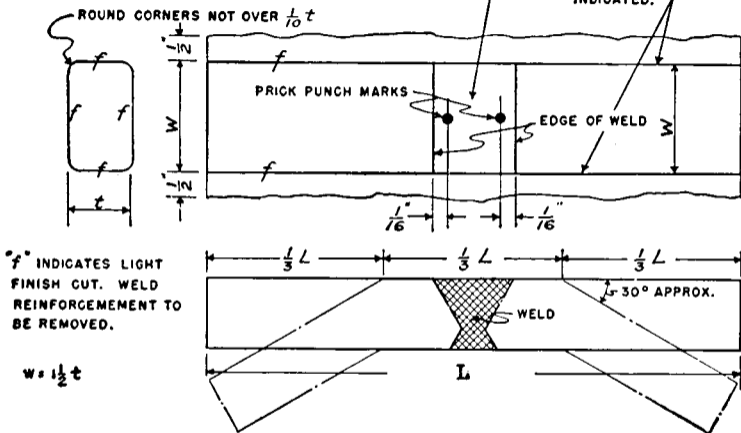


THIS SURFACE TO BE REASONABLY SMOOTH.
ANY TOOL MARKS REMAINING MUST BE
LENGTHWISE OF SPECIMEN

IF COUPONS HAVE BEEN CUT APART
BY A FUSION PROCESS, THE BURNED
EDGES TO BE MACHINED OFF AS
INDICATED.



f INDICATES LIGHT
FINISH CUT. WELD
REINFORCEMENT TO
BE REMOVED.

$$w = \frac{1}{2}t$$

L (Approximate Minimum) = $3in. + 3V$
 V = Width of the Surface of the Weld

The Length of the Bend Specimen is Immaterial provided the Bend occurs at the Weld. The Minimum Length indicated is only Suggestive and is Not Mandatory.