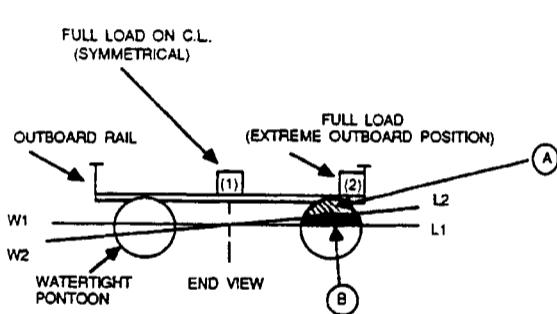
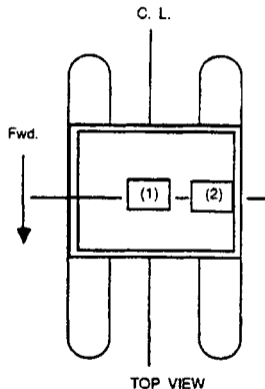


# TRANSVERSE STABILITY STANDARD



W1 L1 = WATER LINE FOR FULL LOAD SYMMETRICAL  
ATHWARTSHIP LOADING.

W2 L2 = WATER LINE FOR FULL LOAD.  
EXTREME OUTBOARD LOADING.



WITH LOAD IN EXTREME OUTBOARD POSITION, POSITION (2),  
AREA (A) MUST BE EQUAL TO OR GREATER THAN AREA (B).