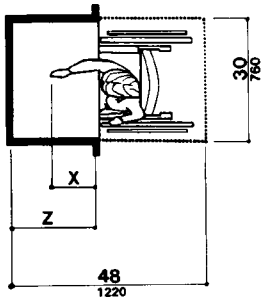
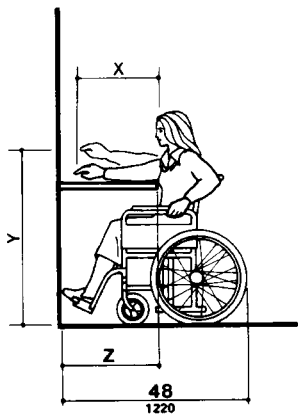


(a)  
High Forward Reach Limit



NOTE: x shall be  $\leq 25$  in (635 mm); z shall be  $\geq x$ . When  $x < 20$  in (510 mm), then y shall be 48 in (1220 mm) maximum. When x is 20 to 25 in (510 to 635 mm), then y shall be 44 in (1120 mm) maximum.

(b)  
Maximum Forward Reach over an Obstruction

Fig. 5  
Forward Reach