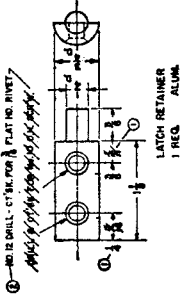
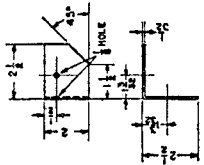
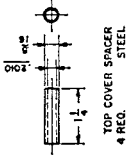
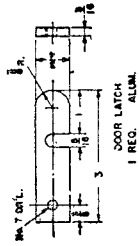
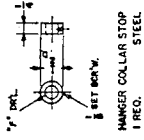
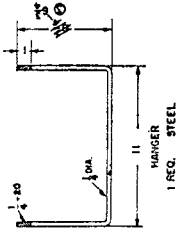
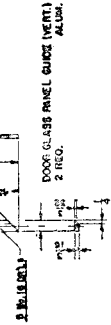
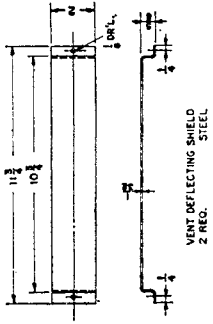
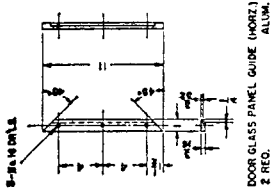


GENERAL SET OF DRAWINGS

NO.	E. C. R.	DATE
1	CHANGE	
2	REVISION	
3	REVISION	
4	REVISION	
5	REVISION	
6	REVISION	
7	REVISION	
8	REVISION	
9	REVISION	
10	REVISION	



① NO. 12 DRILL - CUT IN FOR FLAT NO. 10 NUT.  
*Apply to top of door for door latch*

NO.	REV.	DATE
1		
2		
3		
4		
5		
6		
7		
8		
9		
10		

APPROVALS

DESIGNED BY: *[Signature]*  
CHECKED BY: *[Signature]*  
DRAWN BY: *[Signature]*  
DATE: *[Date]*

PROJECT NUMBER: *[Number]*  
JOB NUMBER: *[Number]*  
SHEET NUMBER: *[Number]*

UNIT: *[Unit]*  
SCALE: *[Scale]*

DATE: *[Date]*  
PAGE: *[Page]*

NATIONAL BUREAU OF STANDARDS  
WASHINGTON, D. C. 20586  
FEDERAL PLASTIC TESTER  
DIVISION OF CHEMISTRY  
OFFICE OF FLAMMABLE LIQUIDS  
RESEARCH  
F. C. WILLYS  
UNITED STATES DEPARTMENT OF COMMERCE  
QUARTER 207  
RESEARCH DIVISION  
FEDERAL BUREAU OF INVESTIGATION  
WASHINGTON, D. C. 20535  
DATE: *[Date]*  
PAGE: *[Page]*