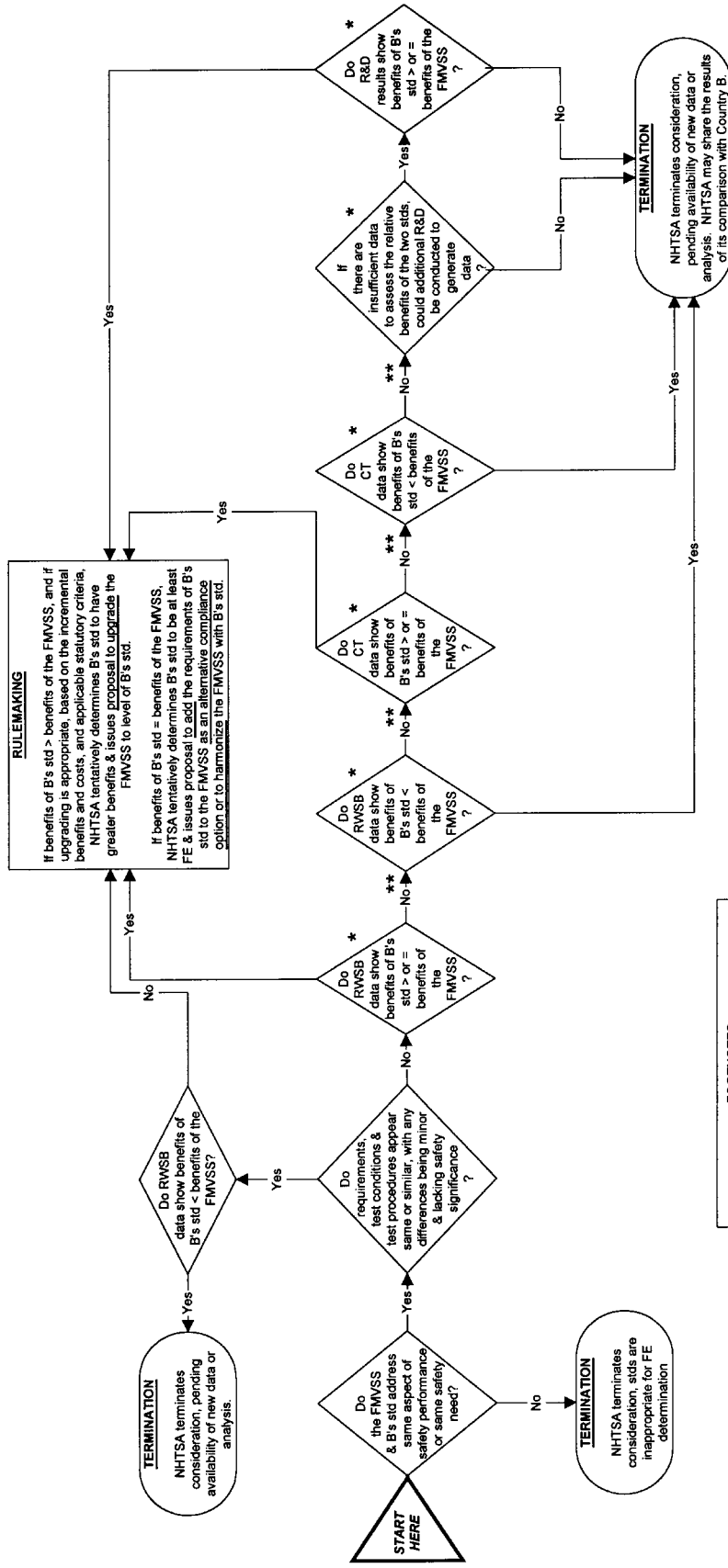


# FUNCTIONAL EQUIVALENCE ASSESSMENT

PROCESS USED BY NHTSA IN COMPARING ITS VEHICLE SAFETY STANDARDS WITH THOSE OF ANOTHER COUNTRY (B) AND DETERMINING WHETHER RULEMAKING IS APPROPRIATE

FIGURE 1



**FOOTNOTES**

- \* Each of these steps includes engineering analysis
- \*\* "No" may simply mean that the data are insufficient to make the specified showing

**GLOSSARY**

CT = Compliance Test  
 FMVSS = Federal Motor Vehicle Safety Standards  
 RWSSB = Real World Safety Benefits (Estimated)  
 R&D = Research and Development