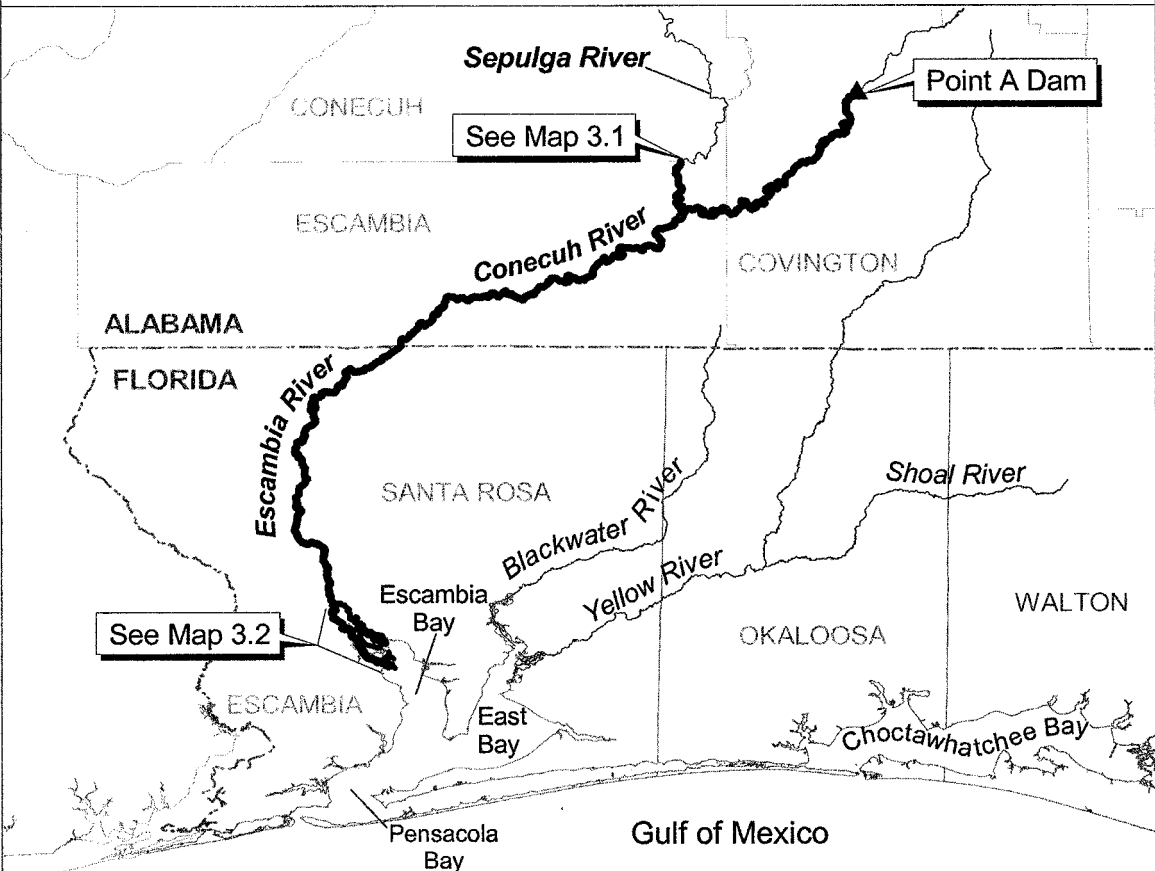




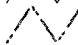



# Unit 3 Escambia River Critical Habitat Unit

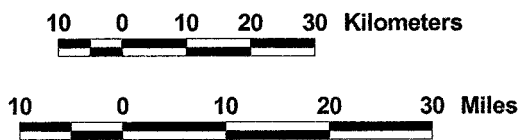


See Map 3.2

See Map 3.1

Point A Dam

-  Critical Habitat
-  Rivers
-  State line
-  County line
-  Dam
-  Critical Habitat - See Map 3.2



This map is provided only for illustrative purposes of Gulf Sturgeon critical habitat. For the precise legal definition of critical habitat, please refer to the narrative unit descriptions.