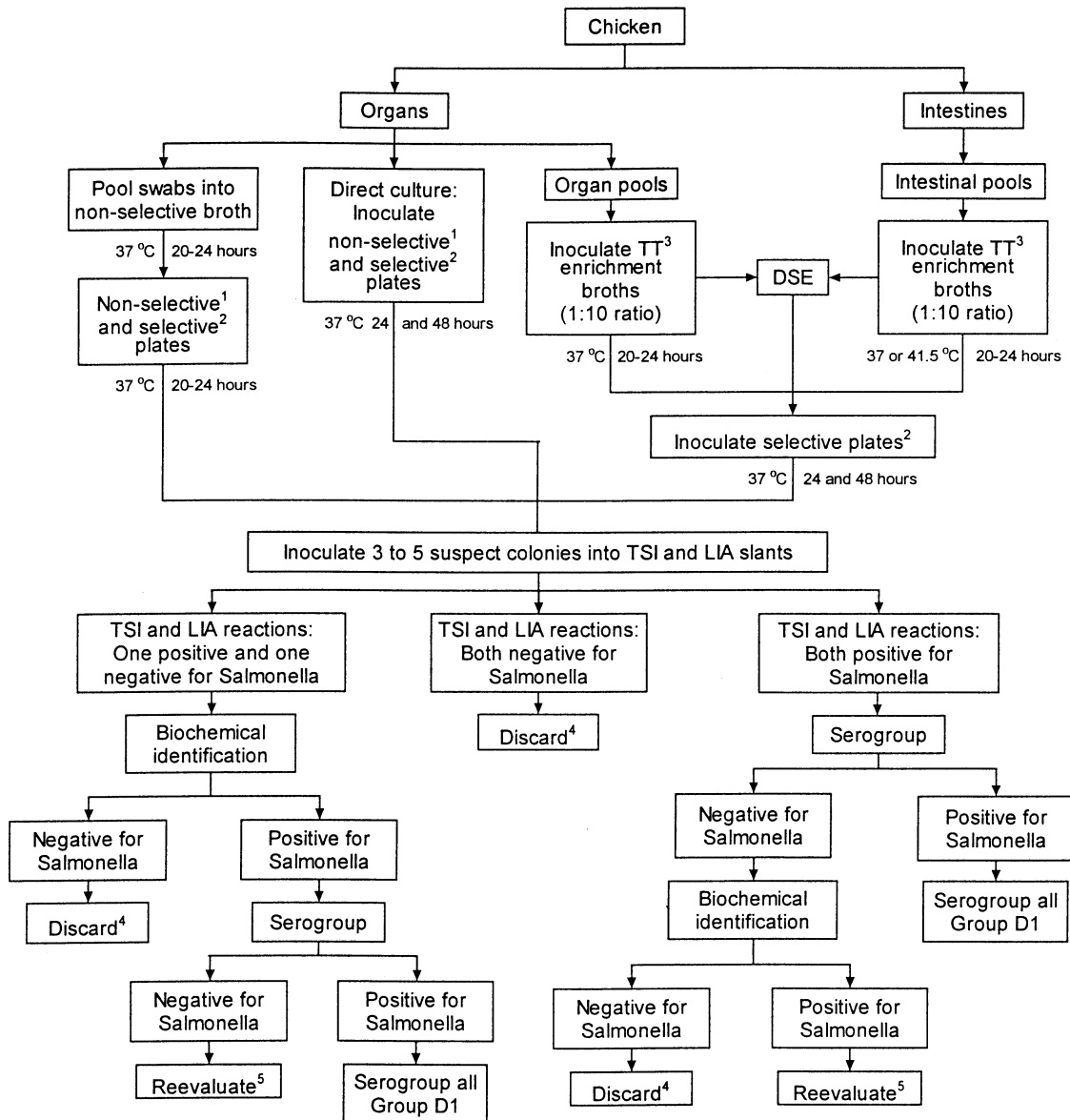


Illustration 1.—Procedure for culturing Pullorum-Typhoid reactors and birds from SE-positive environments.



1. Non-selective plates such as blood or nutrient agar.
2. Selective plates such as MacConkey, Brilliant Green Novobiocin (BGN) for pullorum-typhoid reactors and MacConkey, BGN, and xylose-lysine tergitol 4 (XLT 4) for SE.
3. Tetrathionate enrichment broth.
4. Reevaluate if epidemiologic, necropsy, or other information indicates the presence of an unusual strain of Salmonella.
5. If biochemical identification and serogroup procedures are inconclusive, restreak original colony onto non-selective plating media to check for purity. Repeat biochemical and serology tests.